

# Using Roger Clip-On Mic


## Reference Sheet

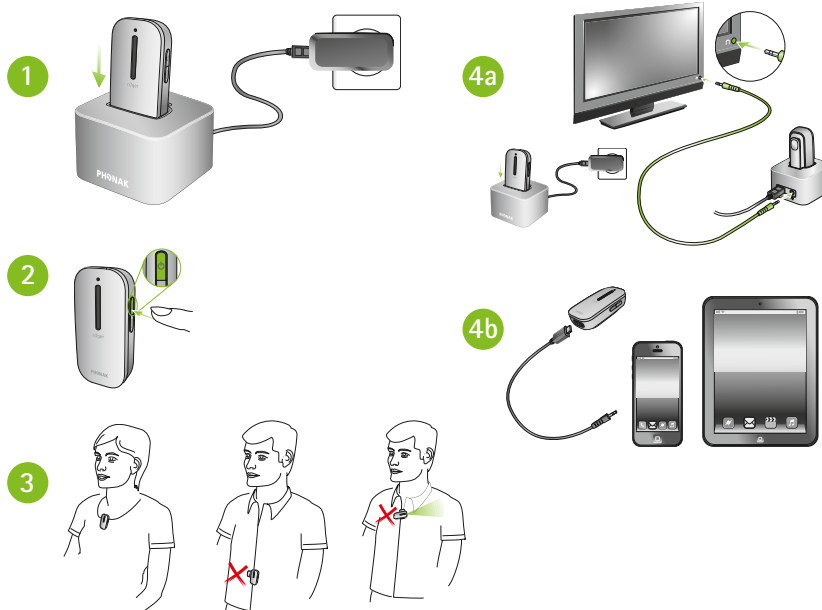
roger







Roger Clip-On Mic was designed as a simple to use microphone for a listener using Roger receivers. Using a Roger Clip-On Mic is as easy as pushing a button.

### Daily use of Roger Clip-On Mic

1. Charge Roger Clip-On Mic either in the docking station or using the mini-USB power cord. Charge for 2 hours for maximum use.
2. Turn microphone on by pressing the  button for 2 seconds until status indicator turns white.
3. Place Roger Clip-On Mic on the talker's shirt using the in-built clip, or hanging on the lanyard (positioned within 8 inches/20 cm of the mouth).
4. Connect your Roger Clip-On Mic to a multimedia device in either of the following ways before switching on the multimedia device:
  - a) Connect the docking station to the audio device and dock the Roger Clip-On Mic.
  - b) Connect the micro-USB cable.
5. Charge the Roger Clip-On Mic daily after usage.



### Roger Clip-On Mic indicator lights

-  Mute – Purple
-  Charging – Orange
-  Fully charged – Green
-  Battery low – Double blinking red